

By Svend Kolte, director of the Greenlanders' House in Århus, eskimologist, MA.

## The foreign student's guide to: Greenland – an Arctic Society

### 1. The Geography and Climate of Greenland

Greenland is an island situated in the North Atlantic Ocean, east of the North American continent. The northern tip of Greenland, Cape Morris Jesup, lies only 740 km south of the North Pole, thus being the northernmost land area in the world. The distance from this point to the southern tip of the island, Cape Farewell, is 2,670 km. The maximum distance from the East to the West coast is 1,050 km.

Greenland is the largest island in the world. With 2,166,086 sq. km. it is much larger than e.g. New Guinea or Madagascar. And almost as large as Spain, Italy, France, United Kingdom, Germany and Poland *together!*

However, most of the island is covered with ice, the so-called Ice Cap of Greenland, which covers about 81% of the total area. The Ice Cap is the largest body of ice in the northern hemisphere, comparable only to the Ice Cap of the South Pole.

The ice-free rim of land, between the Ice Cap and the sea, is very narrow in places, sometimes broader, and comprises about 410,000 sq. km. – comparable to the area of Sweden.

The climate of the country is everywhere arctic, i.e. nowhere does the average summer temperature of July reach 10°. Therefore no extensive forests are found, only clusters of small trees in the very south of the island. The mountainous landscape is mostly without vegetation at all, only valleys and low-lying plains have a lush vegetation of grasses, flowers and berry bushes, almost like the tundra of Siberia and Canada.



Two thirds of the country lie north of the Arctic Circle. There you will find winter darkness from one week to almost four months of the year. During winter darkness, the sun will not rise above the horizon at all. Conversely, in midsummer there is midnight sun for an equivalent period of time. This means that the sun will not set at all, not even in the middle of the night.

The weather in Greenland is very different from the South to the North. Generally the precipitation (the fall of rain or snow) is largest in the South and decreases towards the North, with the very northern part of Greenland being almost a desert with little rain or snow. The open sea along the south-western coast makes for rather mild winters, with an average temperature around -5°, and

cool summers with an average temperature around 7°. In the North, where the sea is completely frozen for almost half the year, winters are much colder, with average temperatures about -20°. The northern summer is, however, comparatively warm because of the many hours of sunshine, and often reaches an average temperature around 6°.

The sea currents around Greenland have great influence upon the climate and ice conditions along the coast. The whole coast of East Greenland is covered year round with drift-ice, carried by the East Greenland Polar Stream from the Polar Sea towards the southern tip of Greenland, the Cape Farewell. Therefore both hunting and fishing are difficult in East Greenland, and the population there is, and has always been, very small.

Along the South Western coast of Greenland, a branch of the warm Atlantic Gulf Stream runs towards the North, eventually waning off. Therefore, the South Western coast and sea are generally free of both drift-ice and winter-ice, making living conditions much easier for the population. This stretch of coast is therefore a centre of habitation, with more than 80% of the population of to-day living in towns and villages along this part of the coast.



The sea along the North Western coast is usually covered with firm and smooth winter-ice from December to May, making travelling and hunting by dog sledge possible in this period, while the sea is almost totally ice-free during the summer, making travelling, hunting and fishing easy.

The Northern coast, facing the Polar Sea, is usually covered with old winter-ice the year through. This part of the coast is now completely uninhabited, with very few attempts of human habitation during history.

The Global Warming in recent years has a greater impact on the Arctic than on more southern parts of the Earth. The ice cover at sea is smaller, thinner and lasts fewer months than before, with negative consequences for arctic animals like the polar bear and most seals. Rain in winter is no longer an exception in many places, creating great difficulties for animals like the caribou and the musk-ox, which cannot graze when the rain eventually turns into an ice-sheet, covering the land. Many arctic species of fish and animals migrate northwards, being substituted by more southern species. All these sudden changes are a great challenge to the local population.

## **2. Population, habitation, language and religion**

The population of Greenland is very small, compared to the vast area. Only 57.000 people live in Greenland (2005). Of these about 50.000 have a native background, being born in the country by native parents, and generally with Greenlandic as their native and daily language. The remaining 7.000 inhabitants are mostly Danes, many of whom work as specialists in trades where skilled Greenlandic labour is lacking. Only a few hundred foreigners, from many different countries, live in Greenland. It is very rare that non-natives speak the local language.

There are 121 inhabited places in all of Greenland, most of which are, however, remote sheep-raising stations with only one family, or very small hunting communities with fewer than 20 people. About 80% of the population live in one of the 17 towns, which are communities with an average size of 2,600 people, ranging from the small isolated “town” of Scoresbysund on the East Coast with 537 inhabitants to Nuuk, the capital of Greenland, with amazing 15,000 citizens.

About 10.000 people with a Greenlandic ethnic background live in Denmark. Most of them are fully integrated in the Danish population; a minority, however, live under very bad conditions in Denmark.

All Greenlanders can be said to be Christian. The old inuit religion or shamanism disappeared completely during the 1800’s, and most people to-day have close ties to the National Church of Greenland, a protestant church. Many other religious congregations work in Greenland, e.g. the Catholic Church, the Pentecostal Movement, Jehovah’s Witnesses, Ba’hai and others, but with few followers.

The official and mostly used language is Greenlandic, see section 7, with Danish as the most important foreign language. Especially young people know some or much English.

### **3. The constitutional status of Greenland**

Greenland was formerly a colony of Denmark, in the period of 1721 till 1953, when the country was adopted as an integral part of Denmark. From 1953 the Danish constitution was extended to Greenland, and all Danish legislation became legal rule in Greenland, unless explicitly exempted. Since 1953 Greenland has elected two members of the Danish Parliament.

Danes and Greenlanders are Danish citizens, with equal rights to live and settle everywhere in the Kingdom. The Queen is the sovereign of both Denmark, Greenland and the Faroe Islands.

But in 1979, Greenland acquired Home Rule, which essentially is independence concerning internal matters. The Greenlandic Government and Parliament (*Landsstyre* and *Landsting / Oqartussat* and *Inatsisartut*) develop their own legislation, and Danish laws generally do not apply in Greenland, apart from the common Constitution.

Abroad and in military matters, however, the Danish government represents Greenland, although the Greenlandic Government has the right to conclude treaties and agreements with other nations in matters concerning Greenland only.

Greenland is not a member of the EU as Denmark is, and EU legislation therefore does not apply to Greenland.

### **4. History of Greenland**

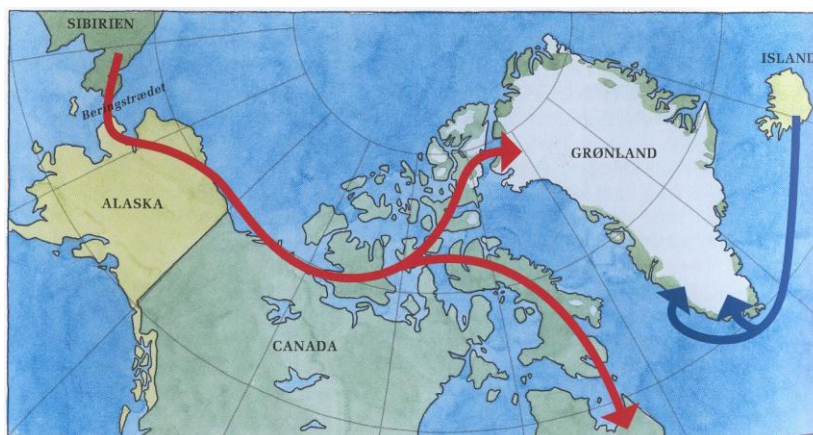
#### **Overview:**

The story of man in Greenland is a book of two chapters. The first chapter is the story of the Palaeo-eskimos (the ancient Eskimos), who lived in Greenland for two and a half millennia, from about the year 2,500 BC until about the year 200.

Then there is a long pause in the history, from about the year 200 till about the year 700, where Greenland lies quite waste, probably with reindeer, musk-ox, wolves and foxes, but with no human beings.

Then the next chapter starts around the year 700 and still continues to-day. First, a few descendants of the Palaeo-eskimos re-migrate from Canada to Greenland's north-western corner, then Norse (Scandinavian) farmers from Iceland colonize the south-western part of Greenland, and finally a new and forceful wave of Eskimo people from Alaska settle everywhere along the coast of Greenland during the 1200's.

The Norse farmers disappear during the 1400's, but are succeeded in the 1600's by visiting European whalers and in the 1700's by Danish missionaries and traders, who settle permanently, making Greenland a colony of Denmark.



In recent years the Greenlanders, who have roots in both Danish and Eskimo tradition and culture, are beginning to develop an independent, modern society here in the very North of the World.

### **The Palaeo-Eskimos, 2,500 BC till about the year 200**

It is well known that the Indians settled in North and South America about 17,000 years ago, before the end of the Ice Age. But the Indians never settled in the Arctic, along the Arctic North American Coast or in Greenland.

But much later, around 2,500 years BC, or 4,500 years ago, small bands of arctic hunters crossed the Bering Straits from Siberia to Alaska and rapidly extended their territory eastwards, on Canada's Barren Grounds, on the big arctic islands of Canada, and eventually along the whole coast of Greenland. Archaeologists in Alaska call these people the Denbigh Culture, in Canada Pre-Dorset Culture, in Greenland Saqqaq Culture or Independence I-Culture. But it is the same people, with the same kinds of tools and the same environmental strategies.

This constant and rapid extension along the American Arctic Coast was, of course, not a conscious exploration, but hunters will always expand their territory in the direction where no humans have ever been before, and the animals therefore are plentiful and easy to take. Other unused resources, like driftwood and hard stones for tools and weapons, added to the rapid expansion.

In spite of the rich natural resources, the first humans in the Arctic must have lived a hard, short and dangerous life. They did not build houses, but summer and winter they lived in tent-houses, built on low walls of stone and turf, on which they erected a fragile tent made of driftwood-poles and animal skins. In the middle of the tent there was a stone-built fireplace, where drift-wood was burned for warmth and light.



During the long winters with no or almost no daylight, they must have relied on meat-caches from the summer and autumn hunt, and it is easy to see the consequences if heavy snowfall obscured the stockpiled food, if the winter lasted longer than usual, if just one male hunter in the small band of people was injured.

But historically these first people in Greenland were very successful, living continuously in the country for more than 2.000 years. But probably in very small numbers and not everywhere in the country at a given time.

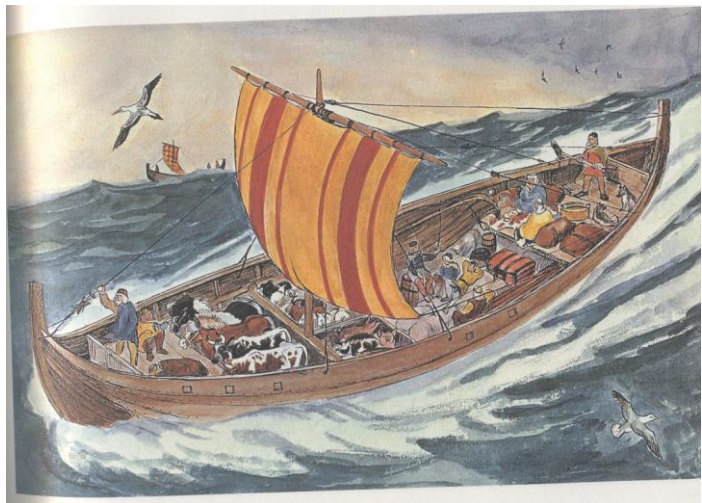
During this long period, they had to adapt to changes in nature. At the end of the period, they relied more and more on hunting for seals and walruses, less on the inland hunt for reindeer and musk-ox. The late palaeo-eskimo period in Greenland is called the Dorset Culture, which was also widespread in eastern Canada.

### **Late Dorset, about the year 700 till 1200:**

Around the year 700 humans were again present in Greenland, although only in a rather small area at the North Western corner of the island, north of present-day Thule. These people were late descendants of the Canadian Dorset Culture, who had survived further to the west. This late influx of people is famous for its ceremonial megalithic constructions, long rectangular enclosures of big stones, with rows of fireplaces. They are often called longhouses, but have probably never been fitted with a roof.

### **The old Norse, from the year 986 till about 1450:**

The Scandinavian farmers in Iceland, the large island to the East of Greenland, colonized certain parts of South Western Greenland, where farming and especially sheep-raising was possible. The colonization started in the year 986, when Eirik Thorvaldsson (Eirik the Red) led a fleet of 25 ships to Greenland. He had visited the country some years before and given it its Scandinavian name “Grønland”, meaning the Green Land, a name that he thought would attract many people.



In the first centuries, the Norse community in Greenland was very successful, the population reached an estimated maximum of perhaps 5,000 people, living at several hundreds of widely scattered farms.

Around the year 1000, Eirik’s son Leiv Eiriksson discovered the coast of continental America, and his brother Thorvald attempted a settlement in New Foundland, but was driven away by native Americans (Indians or Dorset Eskimos).

Changes in the climate, probably also deterioration of the farm land due to overgrazing, made life for the Scandinavians more and more difficult from the year 1200, and eventually only a handful of settlers were left in the very South of the country. The last written evidence of Scandinavians in

Greenland dates back to 1404, and by the end of this century, they had certainly abandoned every farm and village.

**The neo-eskimos or the Thule Culture, the year 1200 till present day:**

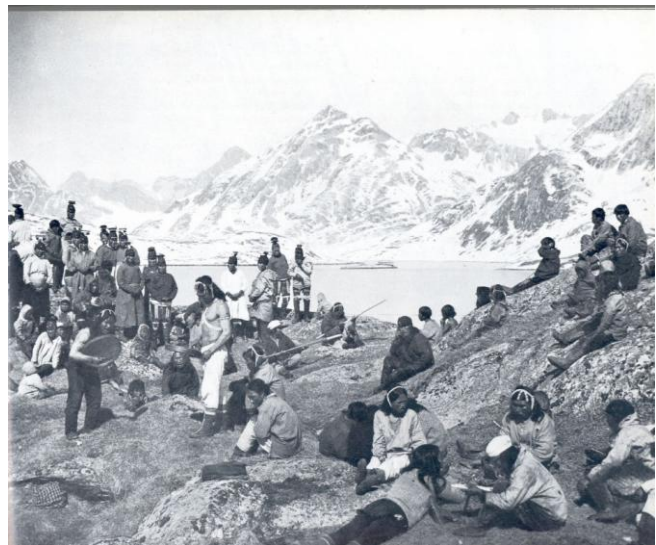
Along the coasts of the Bering Strait and the Pacific Rim, stretching from Northern China to America's West Coast, cultural development had continued from the remote beginning with the Siberian hunters millennia ago. Around the year 1000, a new and distinct culture emerged, called the Thule Culture.

These people were very different from the early palaeo-eskimos. They had effective means of transportation, the whaling boat the *umiag*, kayaks and dog-sledges. They lived in permanent semi dug-out houses in winter, were able to catch even the biggest whales, and could therefore sustain village-communities of several hundred persons.

Around the year 1100, they began a massive emigration towards the east and reached Greenland in just a few generations. They made landfall in the Thule Area, the so-called gateway to Greenland. like all the other American cultures coming to Greenland.

If the late Dorset people, see above, still lived in this area, they were quickly swept away by these new people who settled all along the coast of Greenland, some travelling north-east of the island, some travelling down along the West coast.

The Thule people did hunt reindeer and musk-ox when found, but based their existence on the hunt for big marine mammals, seals, walruses, whales. They had very effective hunting weapons in different kinds of harpoons, nets and skin-boats. The fat or blubber from the catch of mammals was their primary source of heat and light, as they burned the fat in big lamps carved in the soft soap-stone and cooked the meat in pots of the same material.



The traditional myths and tales of these Eskimos speak of many encounters with the Scandinavian farmers in Southeast Greenland, often with very bloody consequences. But archaeologically it cannot be proven that the Eskimos killed off the Scandinavians, but on the other hand it is obvious that the two cultures kept a certain distance. They did not learn much from each other, and very few, perhaps five, old Scandinavian words are recognized in the present Greenlandic vocabulary.

As the descendants of the Thule culture still live to-day, much is known about their intellectual culture. Hundreds of myths, stories, songs and proverbs have been collected in the last centuries, and it is possible to follow the development of the language more than 800 years back to the origin in Alaska.

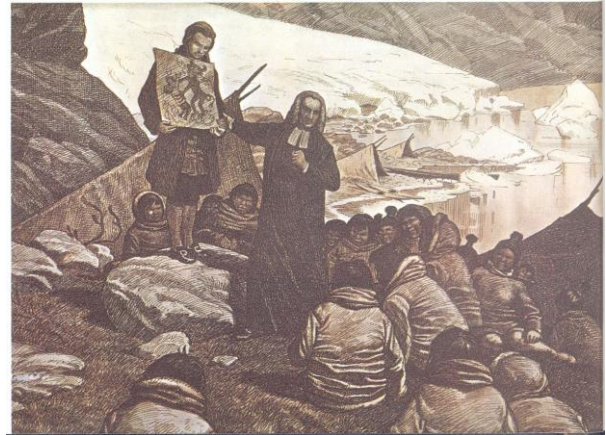
In the long run, not even this strong and effective culture could survive everywhere in Greenland. The northernmost areas, like Hall Land and Peary Land, have never been more than transitional

areas, and most parts of the East Coast had to be abandoned before the middle of the 1800's. A Scottish whaler, captain Clavering, observed the last remaining people in North East Greenland in 1823, and since then more than half of the Greenlandic coast has been uninhabited.

### **The Danish colonization 1721-1953:**

The old Norse community in Greenland was never completely forgotten, although in reality it ceased to exist at the end of the 1400's. In 1721 a Danish/Norwegian priest, Hans Egede, organized a Danish expedition to Greenland with the aim of rechristianizing the supposed old Norse farmers in Greenland. Finding that the Scandinavian farmers had disappeared long ago, he took as his mission to christianize the Eskimo population.

Being a strict and very conscientious Christian, Hans Egede only found a few Greenlanders worthy of baptism during his 15 years of teaching and missioning in Greenland. But his sons, who learned the Eskimo language to perfection, continued his work, and at the end of the 1700's, almost the entire population along the West coast of Greenland had been christianized, was literate and knew a little about the world outside Greenland.



The Danish king was the sponsor of the mission in Greenland, also, of course, with the aim of extending Danish domain in the North Atlantic. Soon Greenland became a closed area to all foreign traders and whalers, and especially the Dutch traders were fought off with guns and warships.

Economically, the Danish activity in Greenland never came to much. Trading blubber, furs and baleen for European goods like firearms, tools and provisions never gave a surplus greater than the expenses to continue the mission, and very few Danes settled in Greenland.

Quite different from the situation in the subarctic North America (the US and Canada), the native population in Greenland never had to compete with European settlers. Therefore the colonization of Greenland was comparatively peaceful, with no bloody wars between settlers and natives, and no merciless exploitation on the part of sailors, traders and adventurers.

But the colonization still meant the destruction of an ancient culture. Religious beliefs, rules, mores and traditional leadership in the old Eskimo society were eradicated by Christianity and the Danish authorities. More than a third of the population was extinguished by epidemic diseases from Europe, and the sale of too much local produce like blubber, furs and meat to Danish traders often meant hunger and cold houses in winter months.

During the many years of Danish colonization, Greenland was artificially kept at a low state of development. Even in the first half of the 1900's most of the population lived traditionally as seal-hunters in many very small villages, with no access to modern inventions such as motors, radio, fishing vessels, modern housing, medical treatment and modern education.

One lasting result of the colonial period, however, was that the whole of this arctic island was recognized as one country. The Danish settlements were extended also to the East coast and the



very North of the West coast, and in 1933, the International Court of Justice in Holland declared all of Greenland to be Danish, thus fending off Norwegian, Canadian and US claims on parts of the island.

### **The build-up period of 1953-1979**

When the Second World War ended in 1945, and connexions between Denmark and Greenland were reestablished, it soon became obvious that Greenland was in a hopeless state of affairs. Poverty, widespread severe diseases like tuberculosis, lack of modern housing, means of transportation and adequate education, all in all a standard of living far below the Scandinavian level, met the Danish prime minister on his first visit to Greenland after the war.

Soon a master plan for modernization in Greenland was developed by a commission of Danish Members of Parliament, civil servants, and representatives from Greenland. In 1953 Greenland ceased to be a colony and became an integral part of Denmark, with normal democratic institutions and the right for everyone to travel in and out of the country and settle wherever one liked to.

The master plan was realized during the 1950's and 1960's with rapid development in all sectors of society: Housing, medical service, transportation, education, social security, fishing industry, and a substantial lift in private and public consumption.

But most of the activity and development was based on Danish skilled labour and Danish public capital, planned and executed from Copenhagen. Many Greenlanders felt that they were mere onlookers of all the busy Danes in Greenland, and public expenditure in Greenland kept rising higher and higher each year.

In the mid-1970's the build-up process was close to completion, and most people in Greenland had the feeling that the centralized Danish steering of all aspects of society in Greenland was a failure and utterly out of date. Greenland had in reality never become an integral part of Denmark, and local leadership, based on local knowledge, language and values, would ensure a much better future for the country.

### **The Home Rule Act 1979 and the home rule of to-day**

So the Greenlandic leaders and the Danish Government and Parliament both had their reasons to develop a new constitutional arrangement between Denmark and Greenland.

A joint commission was established in 1973. It was soon concluded that Greenland did not have the economic basis for full independence, but, on the other hand, all parties would benefit from a much stronger and locally based leadership.

The result of the discussions was that Greenland continued to be a part of the Danish Kingdom, but established its own local parliament and government in order gradually to take over the leadership and authority in all local aspects of the Greenlandic society. The Home Rule Act was accepted by a referendum in Greenland, with more than 70% of the votes for the Act.





Public institutions like hospitals, schools, social security, transport, supply of energy, etc. are no longer paid for and ruled by Danish officials and departments in Copenhagen, but by the Greenlandic Government.

This Government will in turn pay for the total public consumption, partly from tax revenue, partly through a substantial annual transfer of money from the Danish government to the Greenlandic Government.

This annual sum of money has been adjusted upwards several times, in accordance with the transfer of public institutions to the Home Rule Government, and today (2004) it amounts to not less than DKK 2,952 million (or about 400 million euro). About half of the public expenditure in Greenland is paid for by this annual amount.

The transfer of public domains from government to Home Rule authority went very fast, when the process was first initiated in 1979. To-day only a few and mostly insignificant public agencies in Greenland are still run by the Danish Government, with the police and courts of justice in Greenland as the only important Danish organizations still in function in Greenland.

In the Home Rule Act it was not foreseen that the Greenlandic Government should or could act internationally. But lately so many contacts, negotiations, and agreements with foreign states have been concluded by the Home Rule International Office that in 2005 the Danish Parliament agreed to give the Greenlandic Government formal authority to enter into agreements with foreign states on matters that concern the foreign state and Greenland only.

Essentially the Home Rule has been a great success. The society of to-day is much more in accordance with local values and culture, and the organization and legislation in Greenland is much closer to local opinion and conditions than before. The fact that all responsibility for society and everyday matters rests with the local population and their elected leaders, and not with distant and foreign officials and politicians is a moral boost to the development of society.

Many delegations from different countries all over the world visit Greenland each year to study this particular example of semi-independence.

But of course Greenland still has a number of unsolved problems. The economy is far from strong enough to give up the substantial economic help from Denmark, social problems like alcoholism, child abuse, poverty and insufficient housing are far greater than in the rest of Denmark, and in spite of serious efforts to reach a much higher level of education generally, the majority of the adult population still has no professional training at all.

Some Greenlandic politicians claim that immediate and total independence from Denmark will automatically solve these problems. Others claim, perhaps more wisely, that most social problems can be solved only by a great effort, not over a few years, but over generations.

## **5. Business, economy and employment**

There are but few natural resources in Greenland. The biological riches of the sea have at all times been the basis of man's existence in the country, and the catch from modern fishing vessels is to-day the only really important export produce.

It is estimated that the total workforce in Greenland is about 30,000 people, and of these about 6,000 work as fishermen or have their main employment at the fishing factories.

Only a few hundred families earn their living primarily by traditional hunting and fishing, and fewer than two hundred Greenlanders live as farmers at the sheep-raising stations in the south.

In such a vast country, mining and oil industry could be an important part of the economy, but for the time being only one mine, a very small gold mine, is active and has a workforce of only 100 persons. But foreign and local firms prospect very intensely for metals, minerals and oil.

Tourism is a growing industry, with about 16,000 tourists visiting the country each year, and about 2,000 persons are employed directly in tourist activities, in hotels, restaurants and transport.



For many reasons manufacturing industry is almost non-existent in Greenland, apart from the building industry, which employ a little more than 2,000 workers.

Actually, the most common occupation for the whole workforce is public employment, as administrators, teachers, social and medical assistants and experts. This very substantial public sector in the economy is a legacy from the colonial and post-colonial period and has proved to be very difficult to reduce.

About 20% or 6,000 persons are underemployed or unemployed, especially in winter.

The Greenlandic annual export amounts to DKK 2,300 mill. (2004), of which fish products constitute about DKK 2,000 mill. The annual import is about DKK 3,300 mill. worth, the difference between export and import being covered by the Danish financial aid.

Public expenditure amounts to about DKK 7,500 mill., of which almost DKK 3,000 mill. are transferred from the Danish Government, almost DKK 500 mill. come from EU fishing licences, DKK 3,000 mill. from taxes and the rest from interests and profits in public business.

## **6. Education and professional training**

Free and compulsory schooling for all children has existed in Greenland for almost two hundred years, and so the country has a long tradition for literacy and a certain level of education. Most children, however, leave school with no further professional training.

From the beginning of the Home Rule period a number of professional schools were set up in Greenland, like schools for different kinds of tradesmen, clerks, medical assistants, ships' crew and technicians.

Also pre-academic high schools started in the 1980s and a number of young Greenlanders began to study at Danish universities and professional high schools. Today, there are Greenlanders in almost all professional trades and academic specialities.

But the bilingual society and the non-existent tradition for education above primary-school level in many families keep a lot of young persons from making a successful professional career, and still to-day the general level of education in Greenland is far below e.g. the level of education in Denmark. This fact is perhaps the basic problem of the Home Rule society and its future.

## 7. The Greenlandic language

The native language in Greenland is one of the many dialects of the so-called East Eskimo language Inupiaq, which is (or was) spoken along the arctic coast from East Greenland all the way to Northern Alaska. This is simply the language of the people of the Thule Culture, who settled along this coast during the 1200's.

In Western Alaska and in a few villages around East Cape in Siberia other Eskimo languages are spoken – but apart from them, no linguistic relationship exists between the Eskimo language family and any other native language in America or Asia. This proves the very old age of the Eskimo language, which probably has its geographical origin along the coasts of the Bering Strait.

In Greenland, three distinct dialects are found, West Greenlandic, which is the dominant language and the basis of all written Greenlandic, and East Greenlandic and North Greenlandic, which are two fringe dialects with few speakers and no firm written tradition.

Greenlandic is characterized by some very peculiar features:

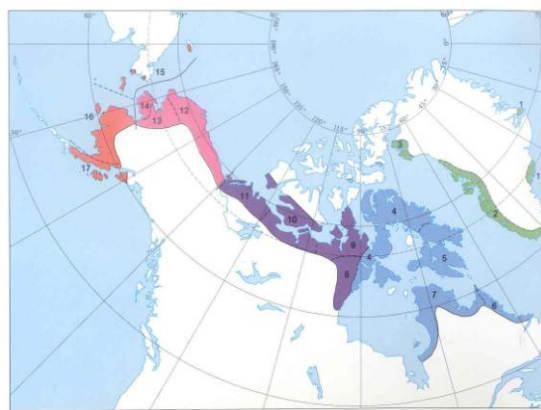
All basic words can be extended with a number of postbases, which add to the meaning of the combination of the stem and previous postbases. E.g:

umiaq (skinboat) –ssuaq (big) – ler (receives)  
- vik (place) –taar (get a new one) –ssa (will in future) – gunar (probably) –put (they) =  
**umiarsualivittaassagunarput** = they are probably going to get a new harbour (literally: they will in future probably get a new place to receive big skinboats).

Also, the language has hundreds of specific grammatical endings to both nouns and verbs to specify different grammatical persons acting with each other. We may take a verbal stem like asa- meaning to love somebody. Asavakkit means I love you, asavarma means you love me, asavatsigit we love you, asavakka I love them. So each possible combination of subject and object has its specific ending, and the seven different tenses of the Eskimo verb each has its peculiar paradigm of endings.

The sound pattern of the language is very simple, however, tending towards a monotonous pattern of vowel+consonant+vowel+consonant. But this sound system, which has only three different vowels (i, a, u) makes it very difficult for Europeans to break the code of the language and understand spoken Greenlandic.

Inuit oqaasiisa nalunaarsorneqarfiat / Inuit Language Map



In fact, very few Danes and other foreigners in Greenland understand or speak Greenlandic, even people who have spent most of their adult life in the country.

But almost all native Greenlanders have Greenlandic as their mother language and in many cases as their only language. Both in the family and in public use, Greenlandic is the dominant language. Public administration, the media, the schools, hospitals and most workplaces use Greenlandic as the current language, and Danish will typically be used only as a means of communication with Danes and other non-Greenlandic speakers.

The literature in Greenlandic is limited, but still impressive compared to other native American languages. Original literate works like novels, poems, history, textbooks for children and adult students are counted in the tens of thousands, and many important works like the Bible, classical European novels etc were translated into Greenlandic long ago.

The two Greenlandic newspapers appear twice a week bilingually, i.e. in Greenlandic and Danish. The Greenland Radio and local broadcasting stations are on air continuously in Greenlandic. Television, however, has mostly Danish and American programmes, with Greenlandic subtitles.

#### **8. Some homepages in English about Greenland:**

<http://www.science.ku.dk/psc>-the very extensive homepage of the Polar Science Center of the University of Copenhagen Center. Links to almost any scientific subject, literature and scientific institutions concerning Greenland and the Arctic area.

[www.greenland.com](http://www.greenland.com) - the Greenland Tourist Office, many links and pictures from all over Greenland. The page can be seen in many different languages

[www.naalakkersuisut.gl](http://www.naalakkersuisut.gl) - the official homepage of the Home Rule government. Click for English version.

[www.natmus.dk](http://www.natmus.dk) - homepage of the Danish National Museum. Choose “English site”, search for Greenland, and you’ll get loads of information about ancient and more recent Greenland History.

[www.denmark.dk](http://www.denmark.dk) - the official web-page of the State of Denmark. Choose English, search for Greenland. There you will find a detailed description of modern and historic Greenland.



